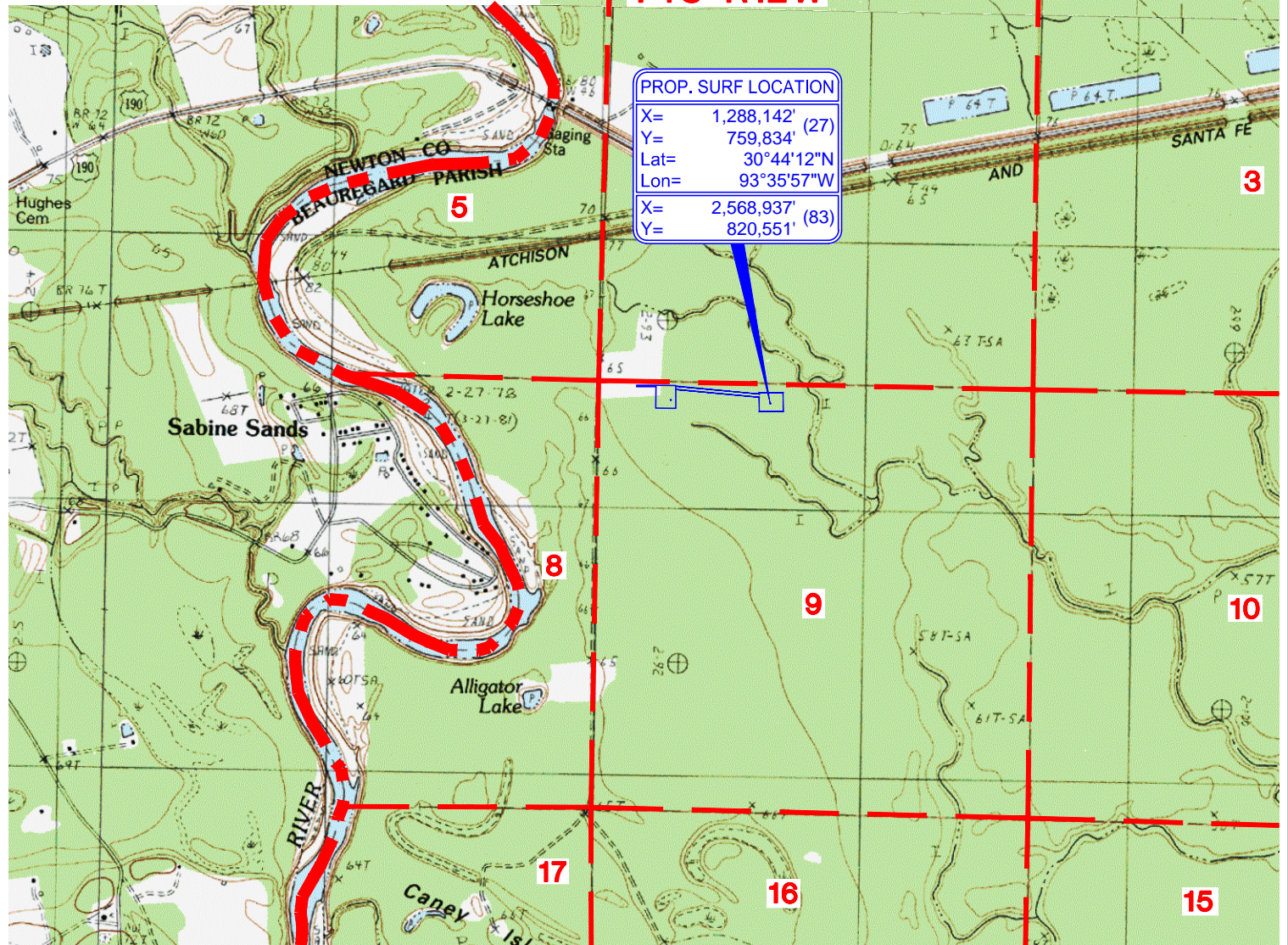


VICINITY MAP
REPRODUCED FROM STATE HIGHWAY MAP



2000' 0' 2000'
SCALE IN FEET

REFERENCE: BASE MAP FROM U.S.G.S. QUADRANGLE MAPS
"MERRYVILLE SOUTH, LA, MERRYVILLE NORTH, LA & BON WIER,
TX-LA" PROVISIONAL EDITION 1982, AT A SCALE OF 1:24000.

PREPARED BY:



TIM MORTON & ASSOCIATES, INC.
REGULATORY & ENVIRONMENTAL CONSULTANTS

JOB NO. 23-010

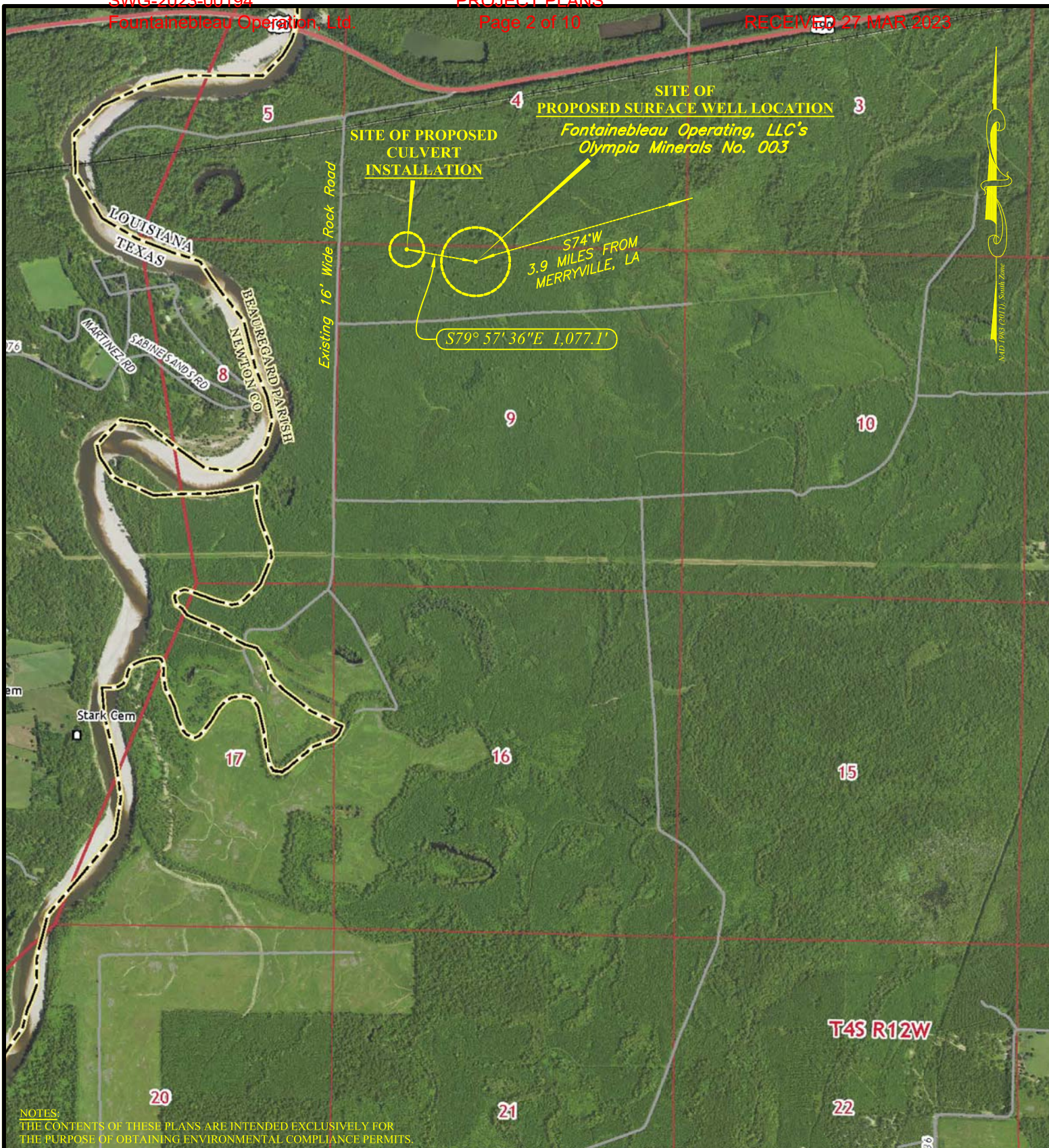
FIGURE 1

FONTAINEBLEAU OPERATING, LLC
SHREVEPORT, LOUISIANA

VICINITY PLAT
OLYMPIA MINERALS WELL NO. 3
BEAUREGARD PARISH, LOUISIANA

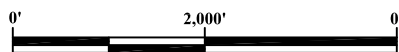
MAP NO. FIG1

MARCH 21, 2023



VICINITY MAP

REPRODUCED FROM USGS "MERRYVILLE, SOUTH"



SCALE: 1" = 2,000'

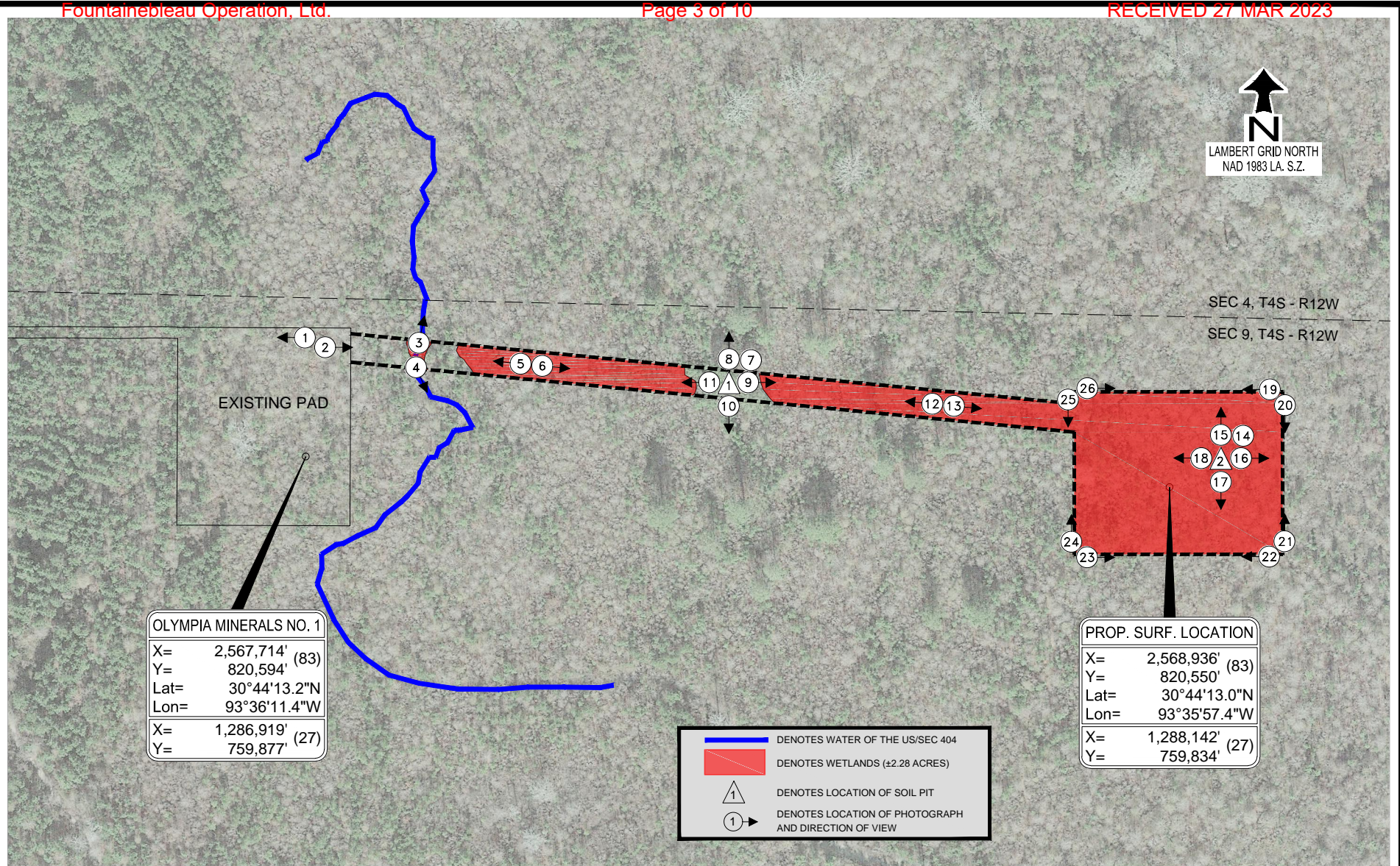
PROPOSED SURFACE WELL LOCATION
ALLIGATOR LAKE FIELD

BEAUREGARD PARISH, LOUISIANA

DATE:
MARCH 7, 2023FONTAINEBLEAU OPERATING, LLC
SHREVEPORT, LA

REVISIONS:

SHEET 1 OF 6



PREPARED BY:



TIM MORTON & ASSOCIATES, INC.
REGULATORY & ENVIRONMENTAL CONSULTANTS

JOB NO. 23-010

FIGURE 2

FONTAINEBLEAU OPERATING, LLC
SHREVEPORT, LOUISIANA

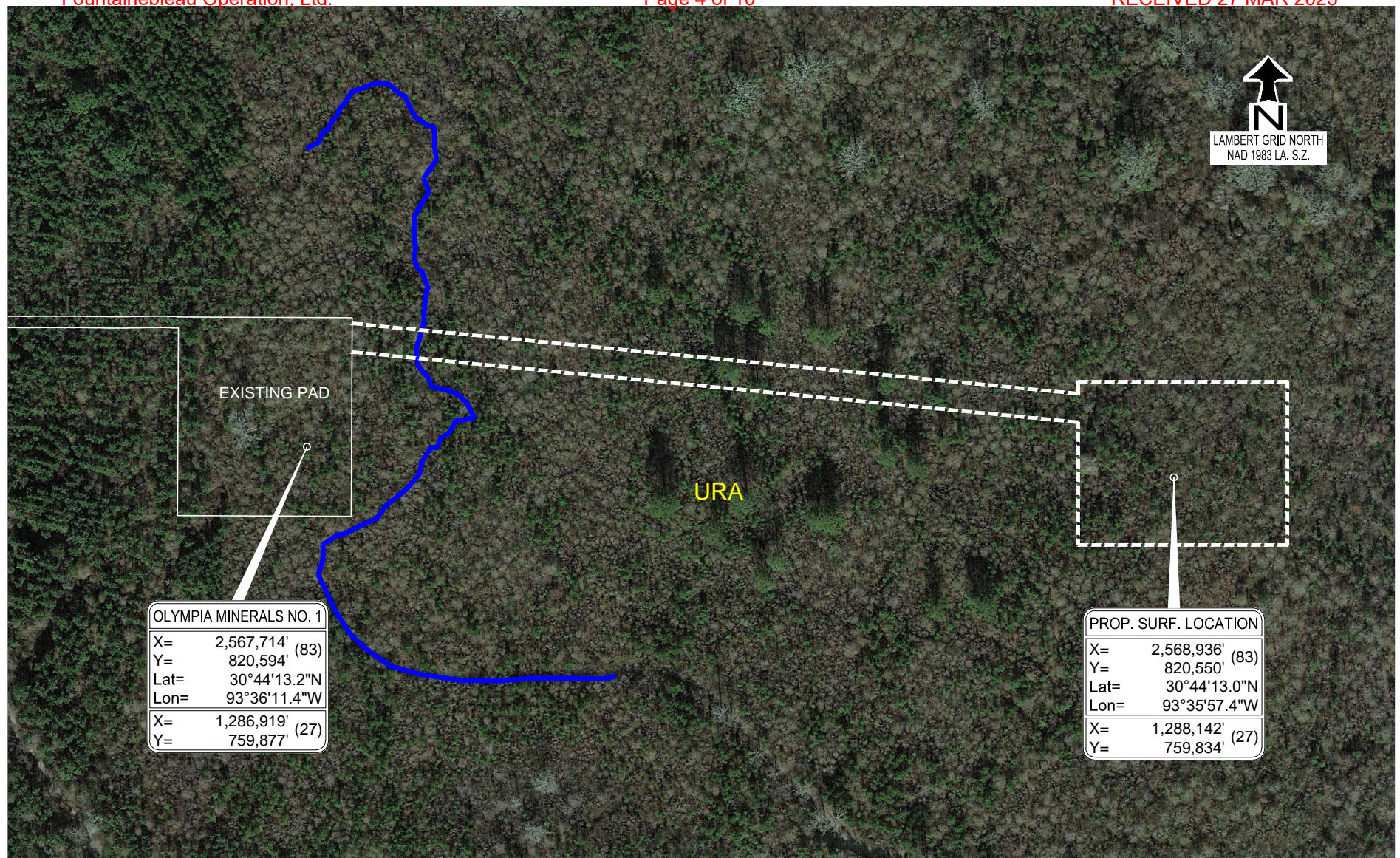
OLYMPIA MINERALS WELL NO. 3

SEC 9, T4S - R12W

BEAUREGARD PARISH, LOUISIANA

MAP NO. FIG2

MARCH 21, 2023



URA - Simelake-Pluck complex, 0-1 % slopes, frequently flooded

PREPARED BY:



TIM MORTON & ASSOCIATES, INC.
REGULATORY & ENVIRONMENTAL CONSULTANTS

JOB NO. 23-010

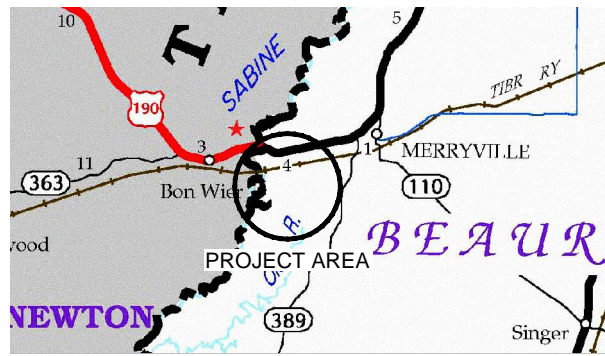
FIGURE 3

FONTAINEBLEAU OPERATING, LLC
SHREVEPORT, LOUISIANA

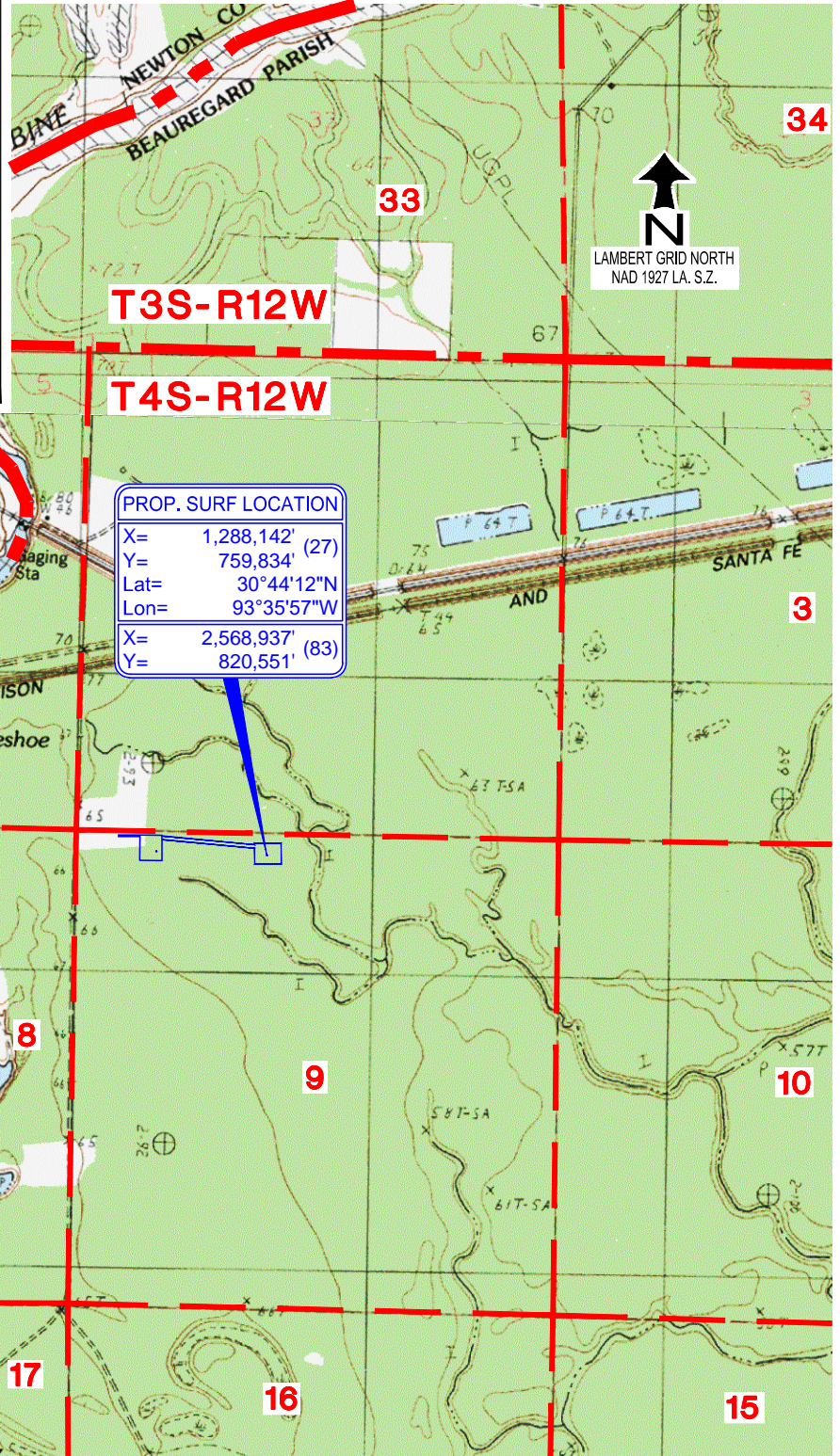
OLYMPIA MINERALS WELL NO. 3
NATURAL RESOURCES CONSERVATION SERVICE
WEB SOIL SURVEY
BEAUREGARD PARISH, LOUISIANA

MAP NO. FIG3

MARCH 21, 2023



VICINITY MAP
REPRODUCED FROM STATE HIGHWAY MAP



2000' 0' 2000'
SCALE IN FEET

REFERENCE: BASE MAP FROM U.S.G.S. QUADRANGLE MAPS
"MERRYVILLE SOUTH, LA, MERRYVILLE NORTH, LA & BON WIER,
TX-LA" PROVISIONAL EDITION 1982, AT A SCALE OF 1:24000.

PREPARED BY:



TIM MORTON & ASSOCIATES, INC.
REGULATORY & ENVIRONMENTAL CONSULTANTS

JOB NO. 23-010

FIGURE 1

FONTAINEBLEAU OPERATING, LLC
SHREVEPORT, LOUISIANA

VICINITY PLAT
OLYMPIA MINERALS WELL NO. 3
BEAUREGARD PARISH, LOUISIANA

MAP NO. FIG1

MARCH 21, 2023

R 12 W

**PROPOSED
SURFACE LOCATION**

Fontainebleau Operating, LLC's

Olympia Minerals No. 003

NAD 1983 [2011], South Zone

$X = 2,568,936.47'$

$Y = 820,550.47'$

$Lat. = 30^{\circ} 44' 12.9847''$

$Long. = -93^{\circ} 35' 57.3947''$

NAD 1927, South Zone

$X = 1,288,142'$

$Y = 759,834'$

$Lat. = 30^{\circ} 44' 12.27''$

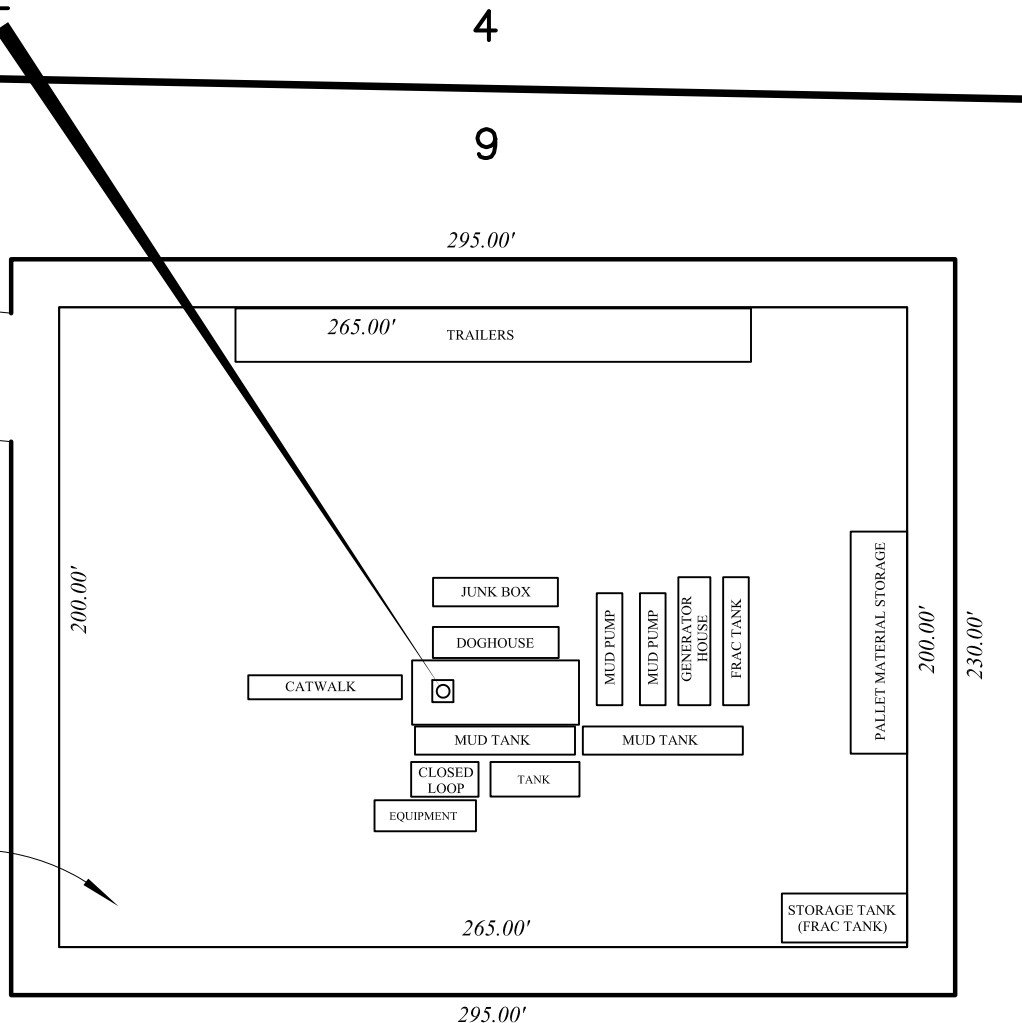
$Long. = -93^{\circ} 35' 56.76''$

Double mats to be laid
on proposed road
(16' wide mat area)

Proposed 40' wide road

T
4
S

Drill Site
295' x 230'
Boarded Pad
265' x 200'



NOTES:

THE CONTENTS OF THESE PLANS ARE INTENDED EXCLUSIVELY FOR
THE PURPOSE OF OBTAINING ENVIRONMENTAL COMPLIANCE PERMITS.

LOCATION MAP



SCALE: 1" = 60'

**PROPOSED SURFACE WELL LOCATION
ALLIGATOR LAKE FIELD**

BEAUREGARD PARISH, LOUISIANA

DATE:
MARCH 7, 2023

FONTAINEBLEAU OPERATING, LLC
SHREVEPORT, LA

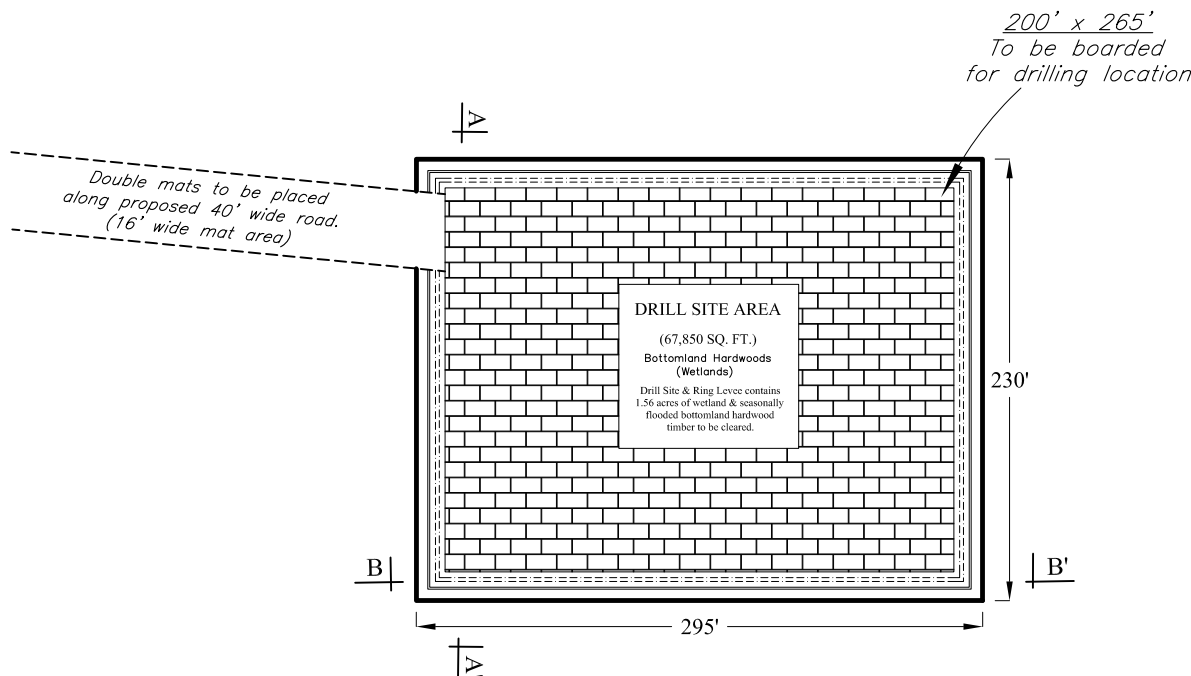
REVISIONS:

SHEET 2 OF 6

T

4

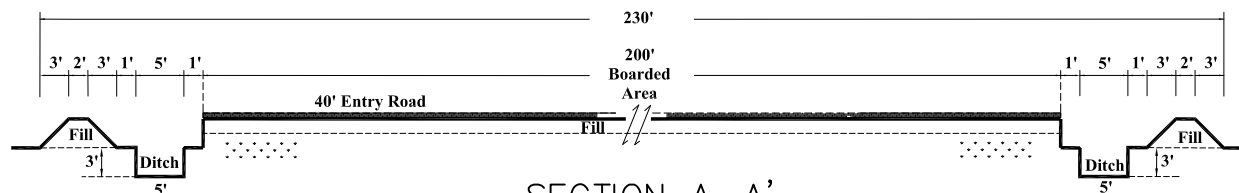
S



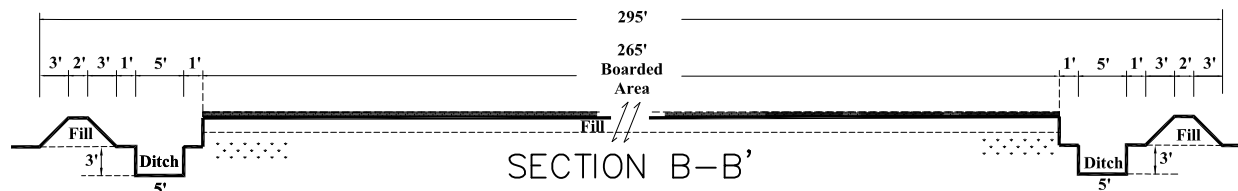
1. APPROXIMATELY 550 CUBIC YARDS OF EXCAVATION REQUIRED TO CONSTRUCT RING LEVEES AROUND DRILL SITE.
2. 1.56 ACRES OF TIMBER TO BE CLEARED.
3. CLOSED LOOP SYSTEM.
4. APPROXIMATELY 630 CUBIC YARDS OF FILL MATERIAL REQUIRED TO LEVEL DRILL SITE AREA.

PLAN

SCALE: 1" = 100'

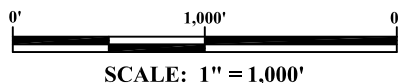


SECTION A-A'
NOT TO SCALE



SECTION B-B'
NOT TO SCALE

LOCATION MAP



PROPOSED SURFACE WELL LOCATION ALLIGATOR LAKE FIELD

BEAUREGARD PARISH, LOUISIANA

DATE:
MARCH 7, 2023

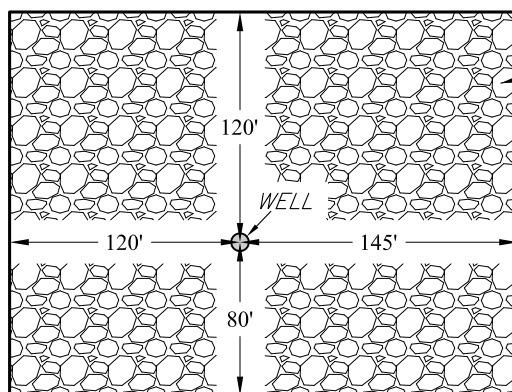
FONTAINEBLEAU OPERATING, LLC
SHREVEPORT, LA

REVISIONS:

SHEET 3 OF 6

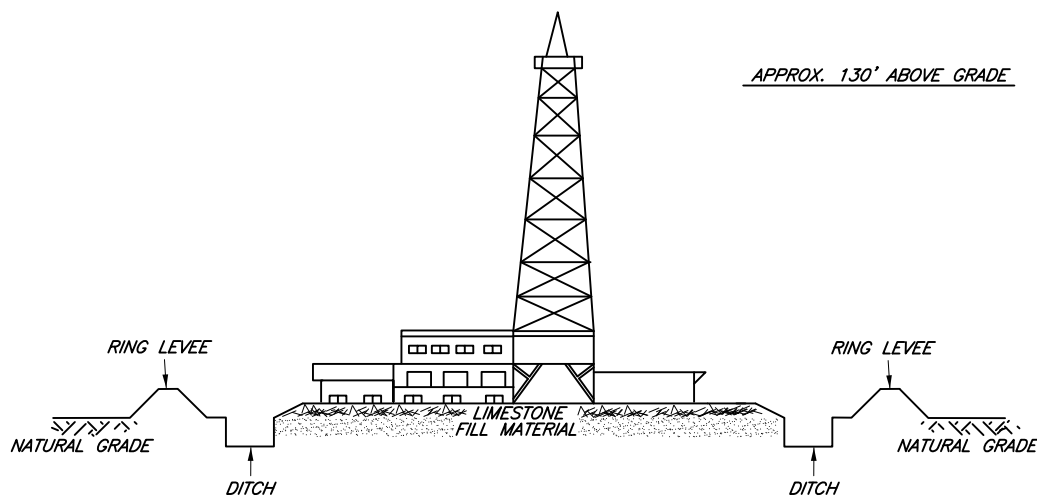
T
4
S

4
9



TOP VIEW

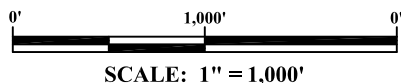
SCALE: 1" = 100'



TYPICAL LAND RIG

NOT TO SCALE

LOCATION MAP



M.P. Mayeux Surveying & Boundary Consulting, LLC
108 Park West Dr., Scott, LA 70583
Project: Fontainebleau - Merryville
File: C3D C-1 T4SR12W Fontainebleau.dwg

PROPOSED SURFACE WELL LOCATION ALLIGATOR LAKE FIELD

BEAUREGARD PARISH, LOUISIANA

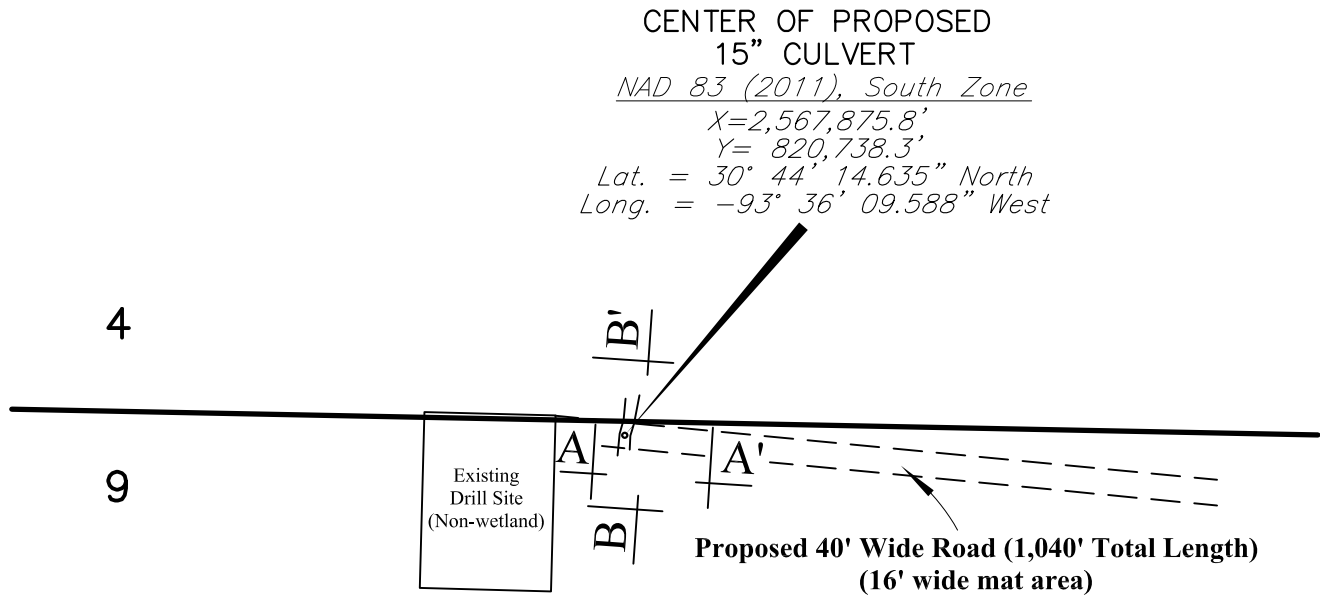
DATE:
MARCH 7, 2023

FONTAINEBLEAU OPERATING, LLC
SHREVEPORT, LA

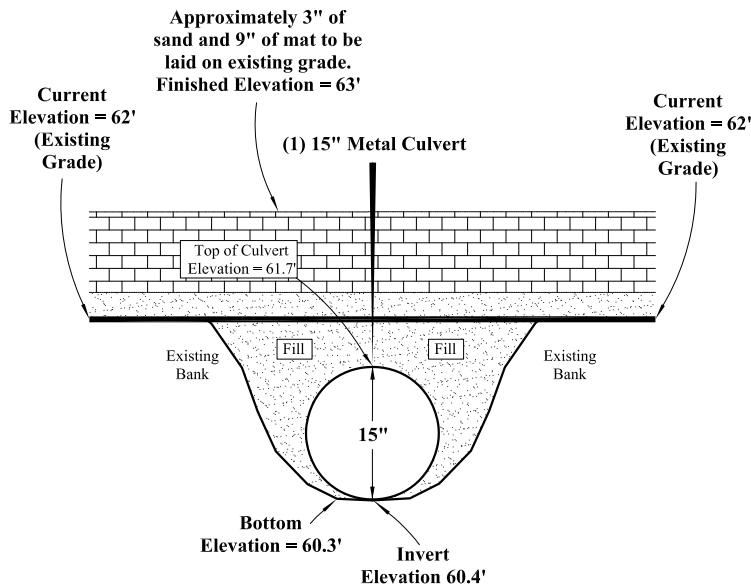
REVISIONS:

SHEET 4 OF 6

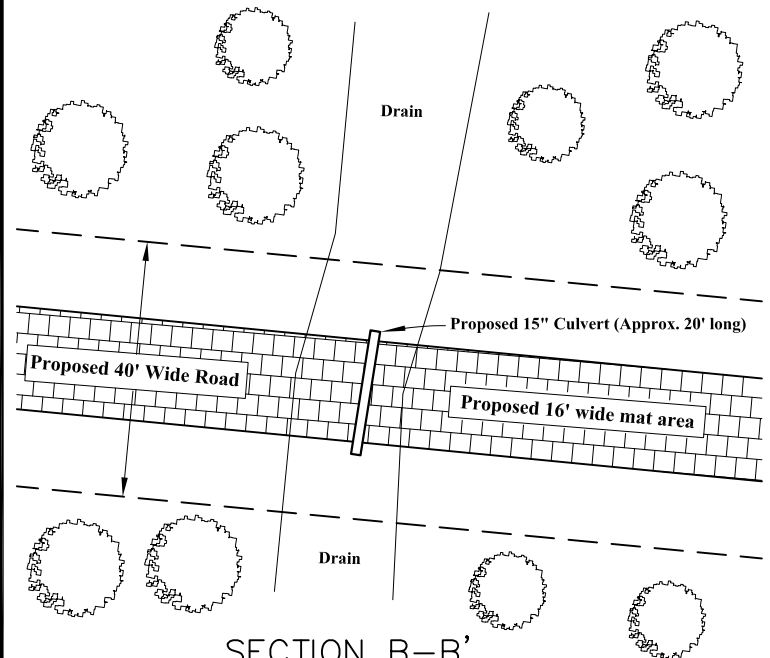
**T
4
S**



5. APPROXIMATELY 10 CUBIC YARDS OF FILL REQUIRED FOR CULVERT PLACEMENT.
6. ELEVATIONS ARE BASED ON NAVD 1988 DATUM.
7. IMPACT IS 350 SQFT. OF HERBACEOUS WETLANDS.

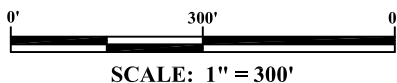


SECTION A-A'
NOT TO SCALE



SECTION B-B'
NOT TO SCALE

LOCATION MAP



**PROPOSED CULVERT PLACEMENT
ALLIGATOR LAKE FIELD**

BEAUREGARD PARISH, LOUISIANA

M.P. Mayeux Surveying & Boundary Consulting, LLC
108 Park West Dr., Scott, LA 70583
Project: Fontainebleau - Merryville
File: C3D C-1 T4SR12W Fontainebleau.dwg

DATE:
MARCH 7, 2023

REVISIONS:
MARCH 14, 2023

FONTAINEBLEAU OPERATING, LLC
SHREVEPORT, LA

SHEET 5 OF 6

**T
4
S**

**PROPOSED
SURFACE LOCATION**

Fontainebleau Operating, LLC's
Olympia Minerals No. 003

NAD 1983 [2011], South Zone

$X = 2,568,936.47'$

$Y = 820,550.47'$

$Lat. = 30^{\circ} 44' 12.9847''$

$Long. = -93^{\circ} 35' 57.3947''$

NAD 1927, South Zone

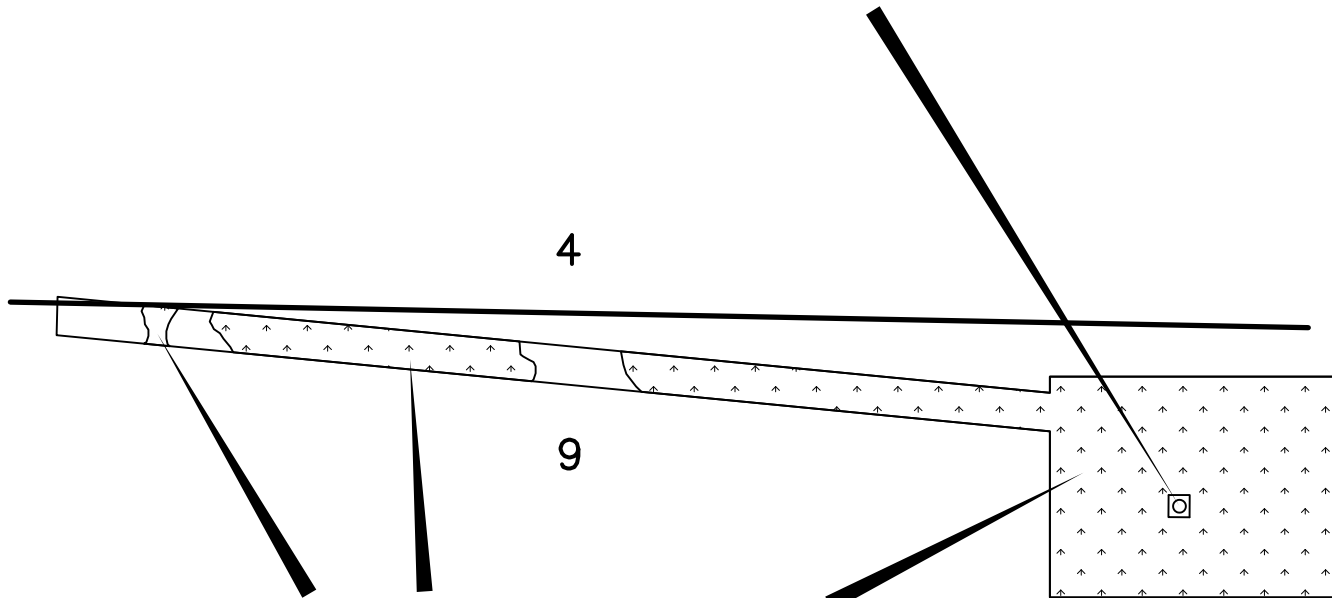
$X = 1,288,142'$

$Y = 759,834'$

$Lat. = 30^{\circ} 44' 12.27''$

$Long. = -93^{\circ} 35' 56.76''$

NAD 1983 (2011), South Zone



INDICATES DELINEATED WETLANDS

8. 2.28 ACRES OF DISTURBED WETLANDS FOR PROPOSED 40' WIDE ROAD AND DRILL SITE.
9. APPROXIMATELY 920 CUBIC YARDS OF FILL REQUIRED FOR LEVELING OF EXISTING GRADE IN DELINEATED WETLANDS AREA.

LOCATION MAP



SCALE: 1" = 200'

**PROPOSED SURFACE WELL LOCATION &
WETLANDS DISTURBANCE
ALLIGATOR LAKE FIELD**

BEAUREGARD PARISH, LOUISIANA

DATE:
MARCH 9, 2023

FONTAINEBLEAU OPERATING, LLC
SHREVEPORT, LA

M.P. Mayeux Surveying & Boundary Consulting, LLC
108 Park West Dr., Scott, LA 70583
Project: Fontainebleau - Merryville
File: C3D C-1 T4SR12W Fontainebleau.dwg

REVISIONS:

SHEET 6 OF 6